

Bonfish (*Albula vulpes*)



Common Names

- Banana fish
- Conejo
- Ten-pounda
- parra
- Salmon peel
- Macabie
- tenny
- cache

Physical Description

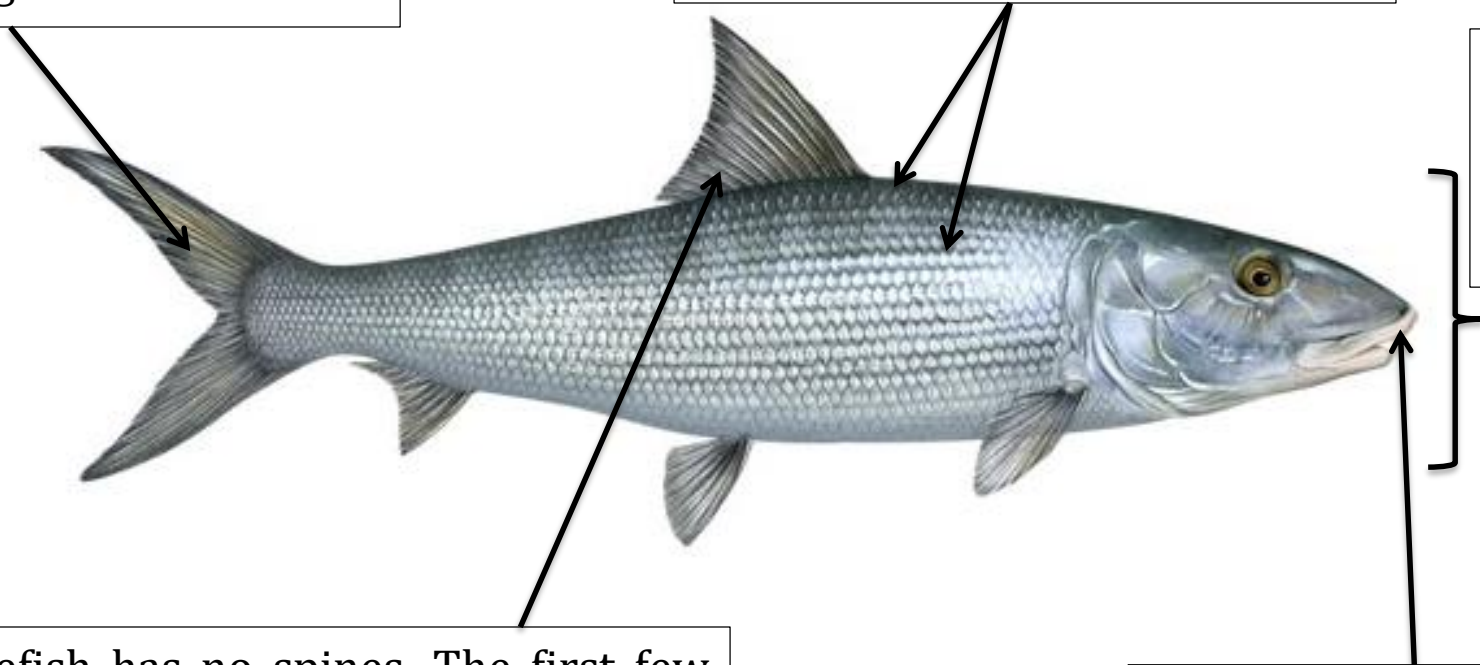
The tail (caudal) is deeply forked with the upper lobe slightly larger than the lower.

From above they appear blue-greenish, with bright silver scales on the sides and dark streaks run in between the scales

The body is slender, round and compressed

The bonefish has no spines. The first few rays of the dorsal fin are higher than the following rays giving it a somewhat triangular shape

The conical nose and upper jaw (mandible) of a Bonefish extends beyond the opening of the mouth (gape)



Global Distribution of Bonefish



Image retrieved from: <http://www.flyandspinfishingaruba.com/info/bonefish/>

Bonefish Distribution in Belize

